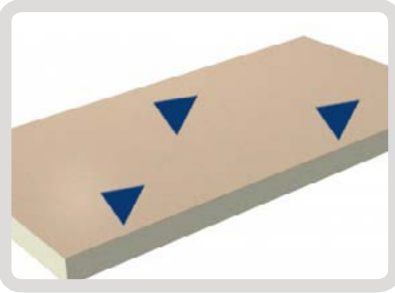




**Automatic tool change store**

The option of the automatic tool change with 20 tool holders allows to enhance the automatic work cycle and to optimize the productivity of the machine. If more storage space is needed, we can propose additional options.



**Sensor to measure the thickness of the work piece**

Most times slabs are not calibrated. This option measures 3 points to calculate a plane surface to which all processes are aligned in order to obtain a perfect result also on work pieces with irregular thickness.



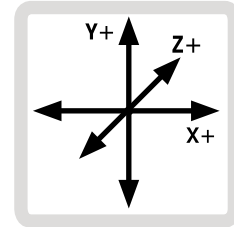
**Remote control**

To ease your work, our console displays all information at hand. But in case you need to move the axis from a different position, you could connect a remote control to the console.

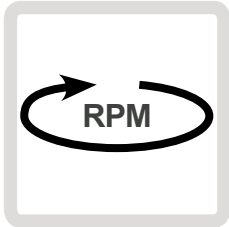


**SOFTWARE PROGRAM "Funeral art"**

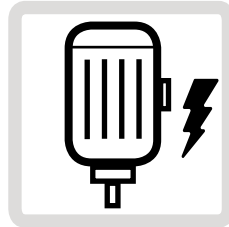
Completes the proprietary Gcam cad/cam program and allows to import grey-scale files to execute bas-reliefs and 3D letters.



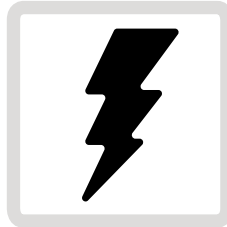
3000x1500x280



13.800



5 kW



400V - 220V  
three-phase



2500 Kg



20' container

**TECHNICAL DATA**

**Work table**

- Work table: 2700 x 1200 mm made of pietra serena, calibrated by the machine itself
- Axis strokes: 3000 x 1500 x 280 mm

**Framework**

- Monobloc frame and bridge in processed steel protected by ceramic
- Footprint and weight: 4000 x 2500 x 1950 mm, 2500kg

**Linear guides**

- Tempered and passivated steel
- Linear guides with 4 rows of recirculating ball bearings

**Operating head**

- Electro spindle 5 kW (7HP)
- Max. RPM 13.800
- ISO 30 cones
- Nickel-plated spindle shaft
- Cooled by liquid
- 3 balls pincer
- Quick tool change
- Sensor to control coupling/uncoupling

**Axis movements**

- 4 brushless motors, 3,2 Nm torque
- Y axis with gantry control

**Vacuum system**

- Preinstalled vacuum distributor to supply 12 suction cups
- 2 high efficient vacuum Venturi system pumps require only simple maintenance

**Control console**

- 21.5" touch screen monitor, to keep under control any parameter
- LAN and WIFI connection for remote assistance
- dedicated graphic card
- SSD hard disc
- Automatic back up to avoid data losses
- Own proprietary software GCAM 3D – developed to process marble and granite
- CAD-CAM 2D, supported by pre-installed macros to program quickly any process in an utmost simple way

**Laser**

2 highly visible laser, to precisely position work pieces and suction cups

**Power supply**

- Electric: 400V 50/60 Hz three-phase (20A) or 220V 50/60 Hz three-phase (30A)
- Pneumatic: 10 bar pressure
- Compressed air: 300 l/min. A compressor of min. 4 kW with 500 l tank is recommended
- Water supply connection required (min. capacity 20 liters/min, pressure min. 2 bar)



**GMATIC 3000 - 3 axis CNC work centre**

Solid, essential, equipped with accessories to simplify the execution of **counter tops, shower plates, inclined recessed kitchen tops, decorative elements, bas-relief and writing.**

The large mono block frame permits to position and to process slabs of large dimensions like those of new synthetic and ceramic materials. The work table is made of natural stone, rectified by the machine itself, and is easily accessible to load the work pieces.

The Gmatic 3000 uses 4 brushless motors to move the axis on linear guides with recirculating ball bearings.

The machine is available in a manual tool change version or with automatic tool change.

The control interface is a console provided with a comfortable large 21.5" touch screen, own GCAM software which has been especially developed for the stone industry. Intuitive and easily to use, it allows to create executable programs nearly instantly by pre-installed macros.





Suction cups

◀ A laser cross shows where to position the suction cups and the work piece on the work table.



Laser



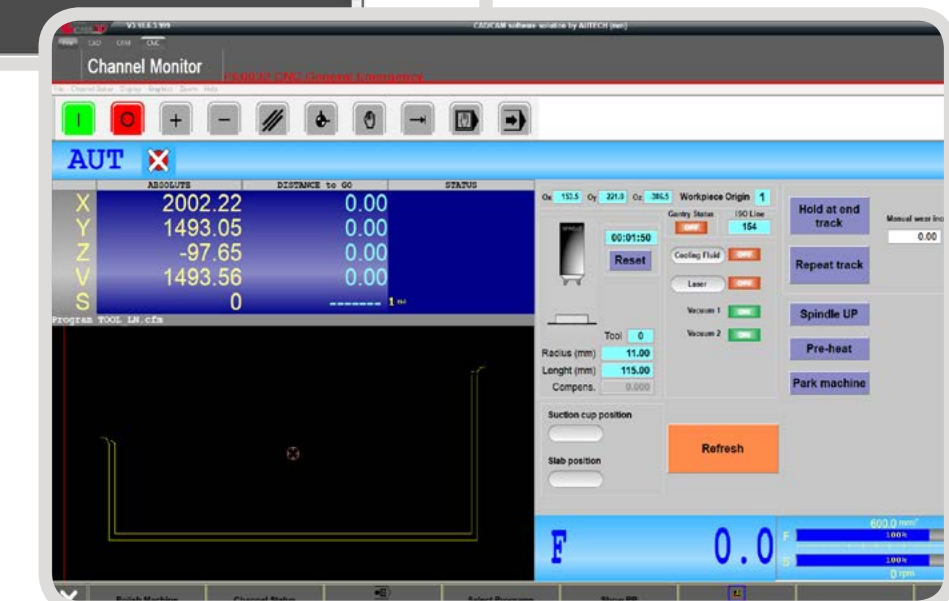
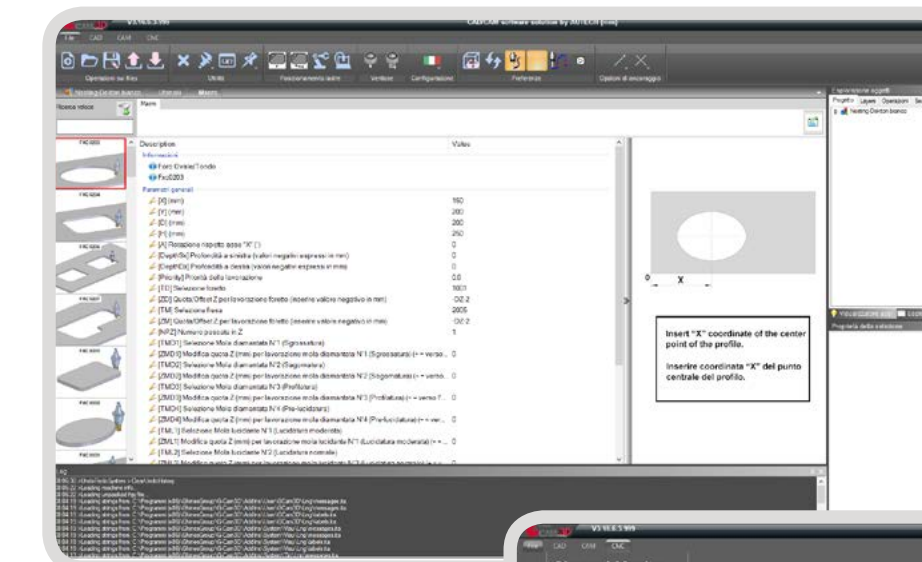
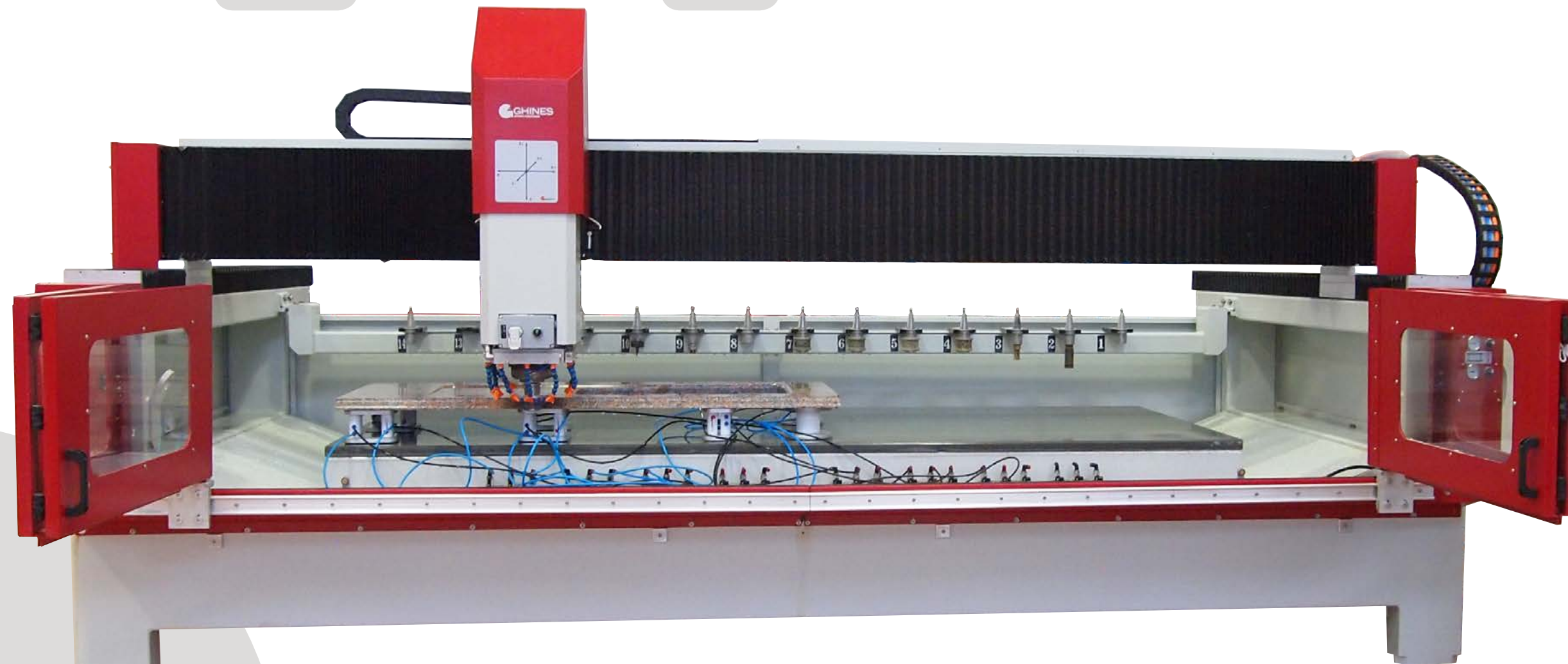
Bas-relief

### Console

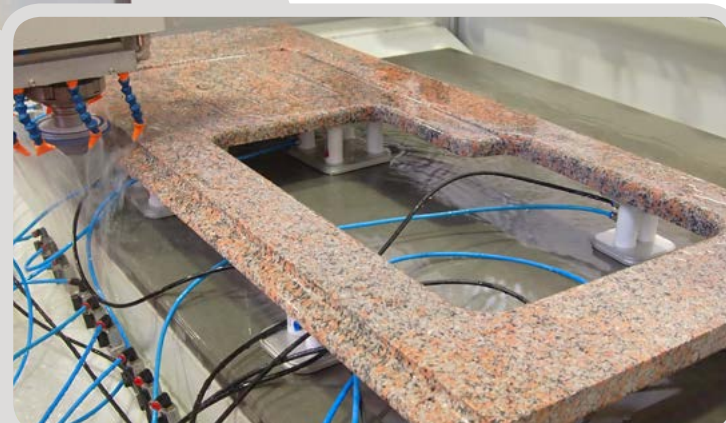
- 21.5" touch screen to keep under control any parameter
- LAN and WIFI connections for remote assistance
- Dedicated graphic card
- SSD hard disk



Console



- Simple with macros
- Imports ISO and DXF files
- Intuitive CAD CAM
- Nesting
- Teleassistance
- Automatic backup



Milling inside and outside



Writing / Engraving



Inclined recessed drain board